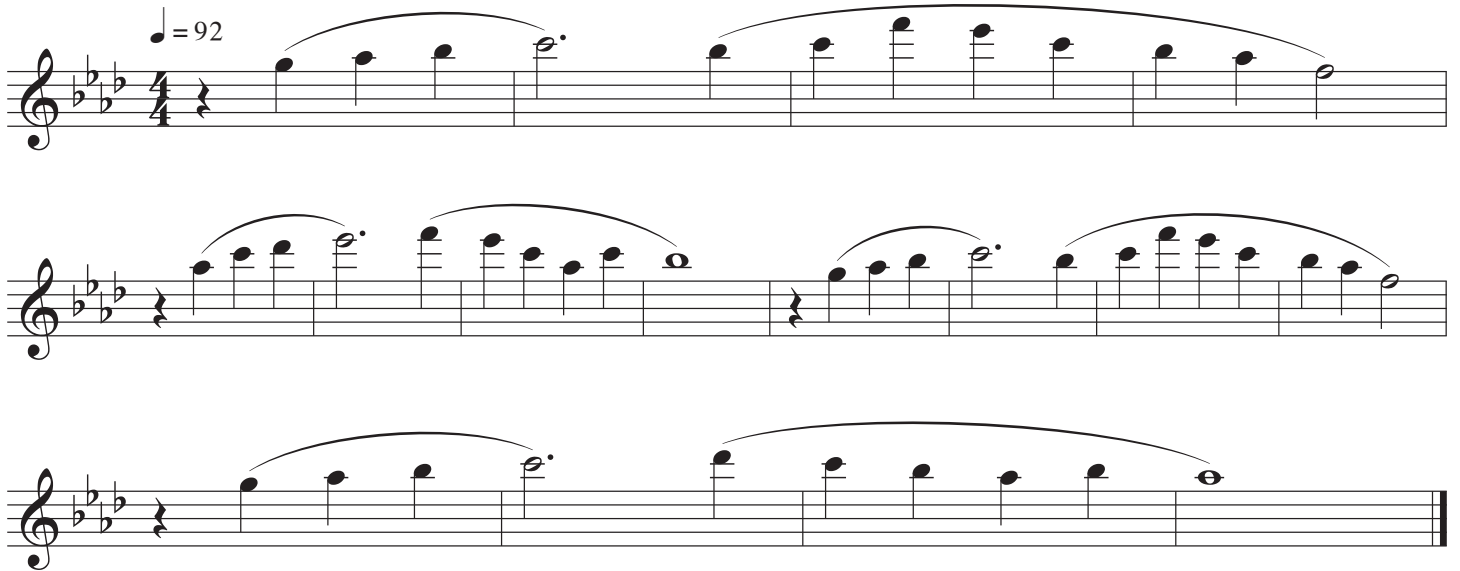


Phrasing Excerpts

for Instruments in C

Danny Boy

$\text{♩} = 92$



Musical notation for the first excerpt, "Danny Boy". It consists of three staves of music in 4/4 time, key of D minor. The tempo is marked as quarter note = 92. The music features a melodic line with several long, sweeping phrases indicated by curved lines above the notes.

Shenandoah

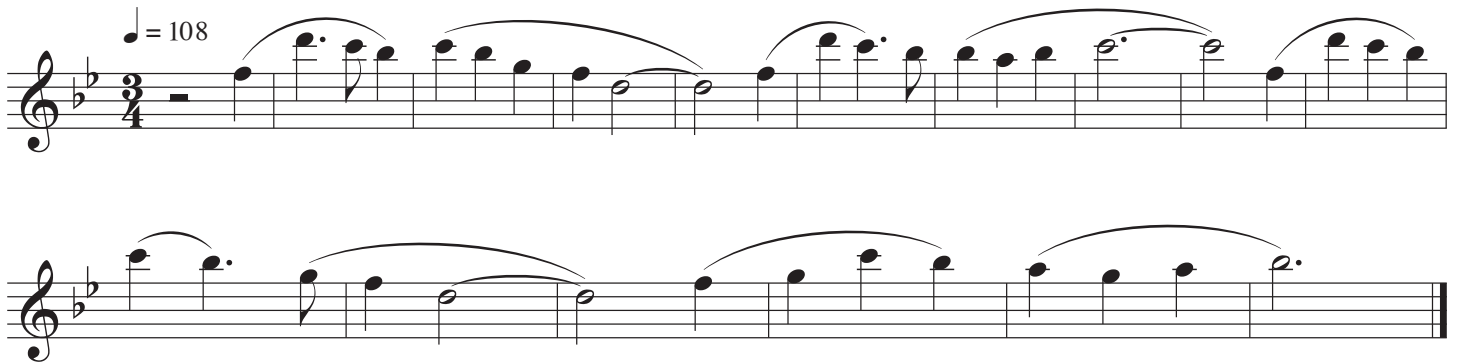
$\text{♩} = 60$



Musical notation for the second excerpt, "Shenandoah". It consists of two staves of music in 4/4 time, key of D minor. The tempo is marked as quarter note = 60. The music features a melodic line with several phrases indicated by curved lines above the notes.

My Bonnie Lies Over The Ocean

$\text{♩} = 108$



Musical notation for the third excerpt, "My Bonnie Lies Over The Ocean". It consists of two staves of music in 3/4 time, key of D minor. The tempo is marked as quarter note = 108. The music features a melodic line with several phrases indicated by curved lines above the notes.

Loch Lomand

$\text{♩} = 80$

Musical notation for the first piece, 'Loch Lomand'. It consists of two staves of music in 4/4 time, key of B-flat major. The tempo is marked as quarter note = 80. The first staff contains measures 1 through 8, and the second staff contains measures 9 through 16. The melody features a mix of eighth and quarter notes, often beamed together, with some notes tied across bar lines.

Water is Wide

$\text{♩} = 120$

Musical notation for the second piece, 'Water is Wide'. It consists of three staves of music in 4/4 time, key of B-flat major. The tempo is marked as quarter note = 120. The first staff contains measures 1 through 4, the second staff contains measures 5 through 8, and the third staff contains measures 9 through 12. The melody is characterized by a steady eighth-note pattern with occasional quarter notes and rests.

Phrasing Excerpts

for Instruments in C (8vb)

Danny Boy

♩ = 92



Musical notation for the first three staves of 'Danny Boy'. The key signature is three flats (B-flat, E-flat, A-flat) and the time signature is 4/4. The tempo is marked as quarter note = 92. The first staff begins with a treble clef, a key signature of three flats, and a 4/4 time signature. The melody consists of quarter and eighth notes, with a long slur covering the first two staves. The third staff concludes the excerpt with a double bar line.

Shenandoah

♩ = 60



Musical notation for the first two staves of 'Shenandoah'. The key signature is three flats (B-flat, E-flat, A-flat) and the time signature is 4/4. The tempo is marked as quarter note = 60. The first staff begins with a treble clef, a key signature of three flats, and a 4/4 time signature. The melody features a mix of quarter, eighth, and sixteenth notes, with a long slur covering the first two staves. The second staff concludes the excerpt with a double bar line.

My Bonnie Lies Over The Ocean

♩ = 108



Musical notation for the first two staves of 'My Bonnie Lies Over The Ocean'. The key signature is three flats (B-flat, E-flat, A-flat) and the time signature is 3/4. The tempo is marked as quarter note = 108. The first staff begins with a treble clef, a key signature of three flats, and a 3/4 time signature. The melody consists of quarter and eighth notes, with a long slur covering the first two staves. The second staff concludes the excerpt with a double bar line.

Phrasing Excerpts

for Instruments in Bb

Danny Boy

♩ = 92



Musical notation for the first excerpt, "Danny Boy". It consists of three staves of music in 4/4 time, featuring a melodic line with a key signature of two flats (Bb) and a tempo marking of quarter note = 92. The melody is characterized by long, sweeping phrases with many slurs.

Shenandoah

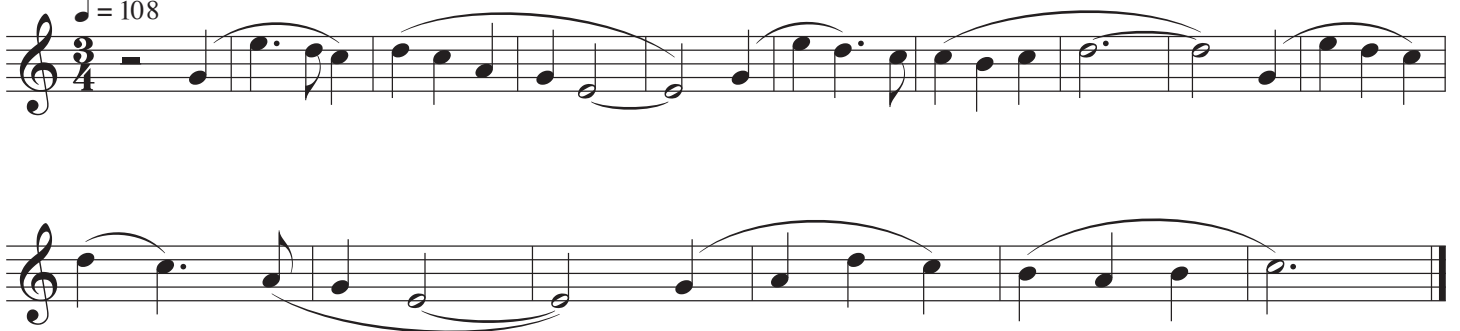
♩ = 60



Musical notation for the second excerpt, "Shenandoah". It consists of two staves of music in 4/4 time, featuring a melodic line with a key signature of two flats (Bb) and a tempo marking of quarter note = 60. The melody is characterized by a more rhythmic and melodic line with many slurs.

My Bonnie Lies Over The Ocean

♩ = 108



Musical notation for the third excerpt, "My Bonnie Lies Over The Ocean". It consists of two staves of music in 3/4 time, featuring a melodic line with a key signature of two flats (Bb) and a tempo marking of quarter note = 108. The melody is characterized by a more rhythmic and melodic line with many slurs.

Loch Lomand

Musical notation for "Loch Lomand". The piece is in 4/4 time with a tempo marking of ♩ = 80. The key signature has two flats (B-flat and E-flat). The notation consists of two staves of music. The first staff begins with a quarter rest, followed by a quarter note G4, and then a series of eighth and quarter notes. The second staff continues the melody with eighth and quarter notes, ending with a double bar line.

Water is Wide

Musical notation for "Water is Wide". The piece is in 4/4 time with a tempo marking of ♩ = 120. The key signature has two flats (B-flat and E-flat). The notation consists of three staves of music. The first staff begins with a quarter rest, followed by a quarter note G4, and then a series of eighth and quarter notes. The second staff continues the melody with eighth and quarter notes, ending with a double bar line. The third staff continues the melody with eighth and quarter notes, ending with a double bar line.

Phrasing Excerpts

for Instruments in Eb

Danny Boy

♩ = 92



Musical notation for the first three staves of "Danny Boy". The first staff begins with a treble clef, a key signature of one flat (Bb), and a 4/4 time signature. The tempo marking is quarter note = 92. The melody consists of quarter and eighth notes, with a long slur covering the final six notes of the first staff. The second and third staves continue the melody with similar phrasing and slurs.

Shenandoah

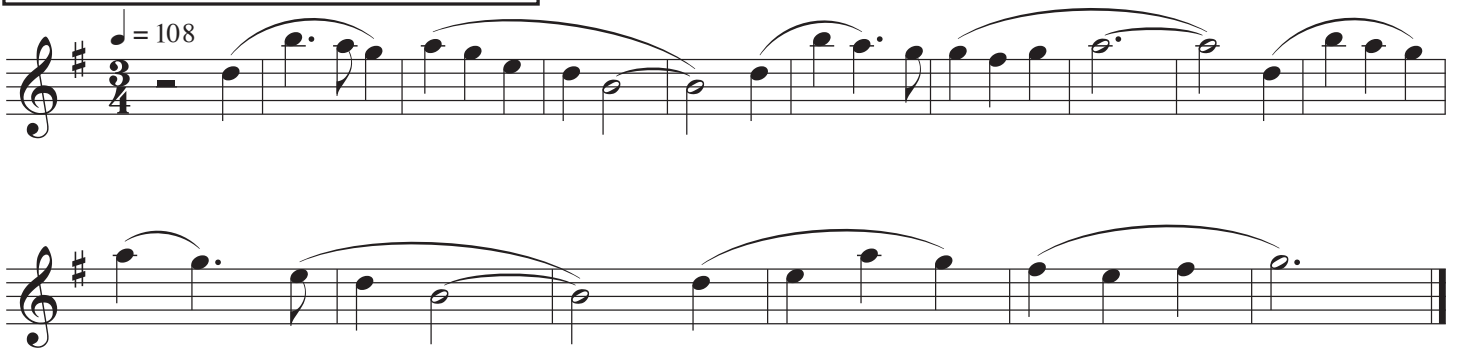
♩ = 60



Musical notation for the first two staves of "Shenandoah". The first staff begins with a treble clef, a key signature of one flat (Bb), and a 4/4 time signature. The tempo marking is quarter note = 60. The melody features a mix of quarter, eighth, and sixteenth notes, with many slurs. The second staff continues the piece with similar rhythmic patterns and phrasing.

My Bonnie Lies Over The Ocean

♩ = 108



Musical notation for the first two staves of "My Bonnie Lies Over The Ocean". The first staff begins with a treble clef, a key signature of one sharp (F#), and a 3/4 time signature. The tempo marking is quarter note = 108. The melody is characterized by eighth and sixteenth notes, with frequent slurs. The second staff continues the piece with similar phrasing and slurs.

Loch Lomand

$\text{♩} = 80$

Musical notation for the first piece, 'Loch Lomand'. It consists of two staves of music in 4/4 time with a key signature of one flat (B-flat). The tempo is marked as quarter note = 80. The first staff contains measures 1 through 8, and the second staff contains measures 9 through 16. The melody features a mix of eighth and quarter notes, often beamed together, with some notes having slurs or accents.

Water is Wide

$\text{♩} = 120$

Musical notation for the second piece, 'Water is Wide'. It consists of three staves of music in 4/4 time with a key signature of one sharp (F#). The tempo is marked as quarter note = 120. The first staff contains measures 1 through 4, the second staff contains measures 5 through 8, and the third staff contains measures 9 through 12. The melody is characterized by a steady eighth-note pattern with occasional quarter notes and slurs.

Phrasing Excerpts

for Instruments in F

Danny Boy

♩ = 92



Musical notation for the first three staves of "Danny Boy". The music is in F major (one flat) and 4/4 time. The tempo is marked as ♩ = 92. The first staff begins with a quarter rest followed by a half note G4, then a quarter note A4, and a half note B4. The second staff continues with a quarter note C5, a quarter note B4, a quarter note A4, and a quarter note G4. The third staff concludes with a quarter note F4, a quarter note G4, a quarter note A4, and a half note B4.

Shenandoah

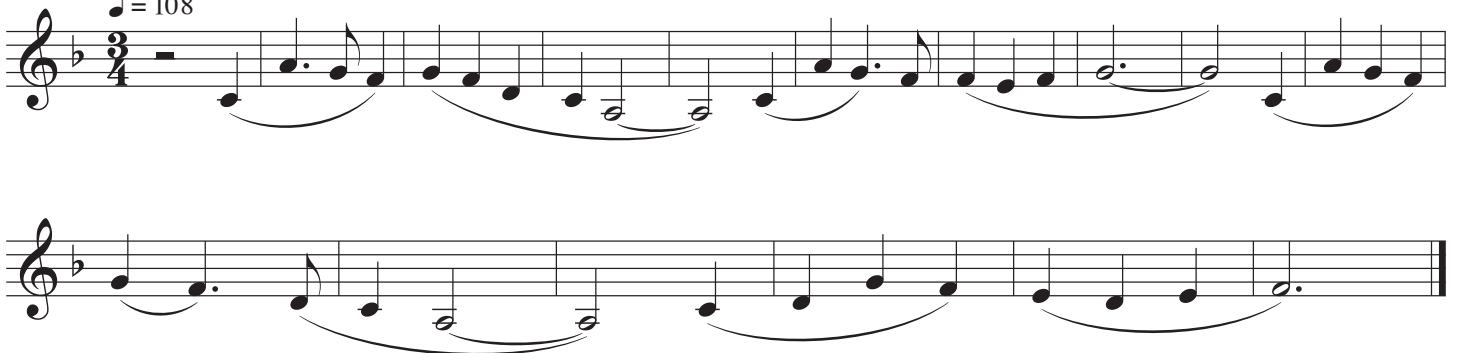
♩ = 60



Musical notation for the first two staves of "Shenandoah". The music is in F major (one flat) and 4/4 time. The tempo is marked as ♩ = 60. The first staff starts with a quarter rest, followed by a quarter note G4, a quarter note A4, a quarter note B4, and a quarter note C5. The second staff continues with a quarter note B4, a quarter note A4, a quarter note G4, and a quarter note F4.

My Bonnie Lies Over The Ocean

♩ = 108



Musical notation for the first two staves of "My Bonnie Lies Over The Ocean". The music is in F major (one flat) and 3/4 time. The tempo is marked as ♩ = 108. The first staff begins with a quarter rest, followed by a quarter note G4, a quarter note A4, and a quarter note B4. The second staff continues with a quarter note C5, a quarter note B4, a quarter note A4, and a quarter note G4.

Loch Lomand

Musical notation for "Loch Lomand" in 4/4 time, key of B-flat major. The tempo is marked as quarter note = 80. The piece consists of two staves of music. The first staff begins with a quarter rest, followed by a sequence of eighth and quarter notes, including slurs and ties. The second staff continues the melody with similar rhythmic patterns and concludes with a double bar line.

Water is Wide

Musical notation for "Water is Wide" in 4/4 time, key of B-flat major. The tempo is marked as quarter note = 120. The piece consists of three staves of music. The first staff begins with a quarter rest, followed by a sequence of quarter and eighth notes, including slurs and ties. The second staff continues the melody with similar rhythmic patterns and concludes with a double bar line. The third staff continues the melody with similar rhythmic patterns and concludes with a double bar line.

Phrasing Excerpts

for Instruments in C

Danny Boy

♩ = 92



Loch Lomand

$\text{♩} = 80$



Two staves of musical notation for the piece "Loch Lomand". The first staff begins with a tempo marking of quarter note = 80. The music is in bass clef, 4/4 time, and D minor. It features a series of eighth-note patterns with slurs and accents, followed by a final phrase ending with a double bar line.

Water is Wide

$\text{♩} = 120$



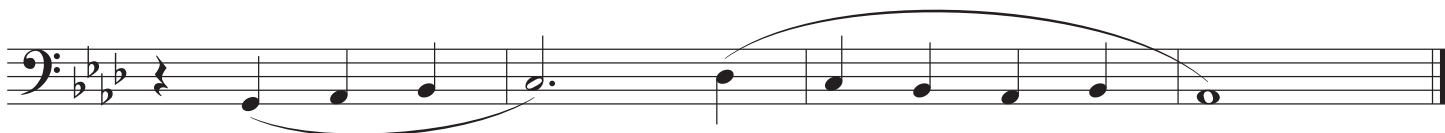
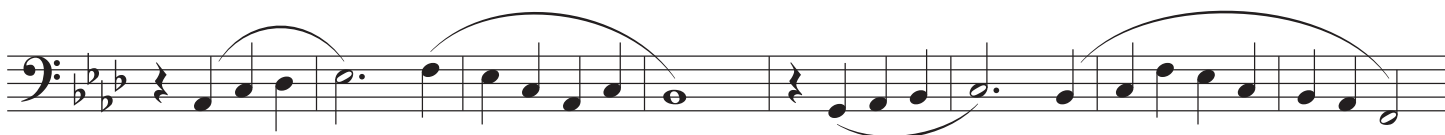
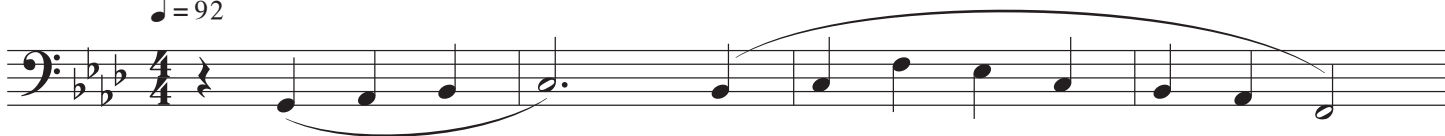
Three staves of musical notation for the piece "Water is Wide". The music is in bass clef, 4/4 time, and D minor. It features a series of eighth-note patterns with slurs and accents, followed by a final phrase ending with a double bar line.

Phrasing Excerpts

for Instruments in C (8vb)

Danny Boy

♩ = 92



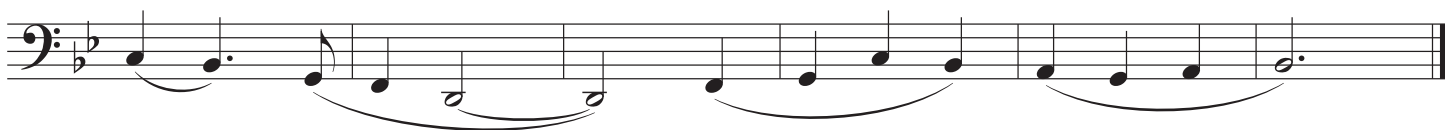
Shenandoah

♩ = 60



My Bonnie Lies Over The Ocean

♩ = 108



Loch Lomand

$\text{♩} = 80$

Two staves of musical notation for 'Loch Lomand'. The first staff begins with a quarter rest, followed by a sequence of eighth and quarter notes with slurs. The second staff continues the melody with similar rhythmic patterns, ending with a quarter note and a quarter rest.

Water is Wide

$\text{♩} = 120$

Three staves of musical notation for 'Water is Wide'. The first staff begins with a quarter rest, followed by a sequence of quarter and eighth notes with slurs. The second staff continues the melody with similar rhythmic patterns, ending with a quarter note and a quarter rest. The third staff continues the melody, ending with a quarter note and a quarter rest.